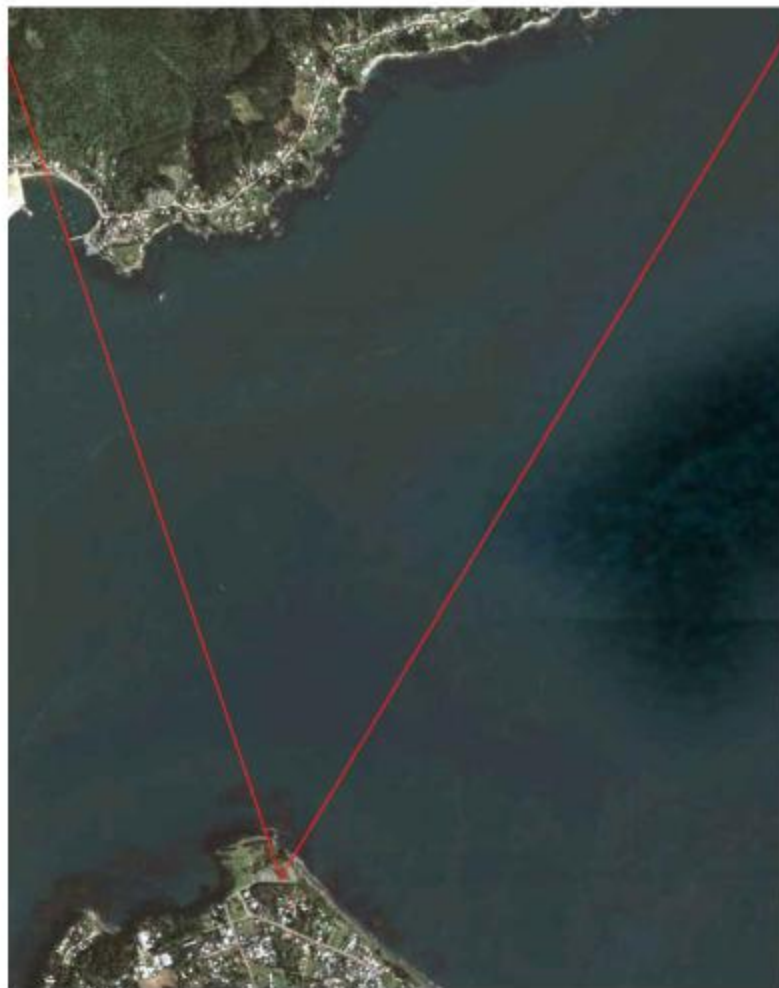


ANÁLISIS DE TRES OBRAS BAJO TRES CONCEPTOS



FUERTE NIEBLA, 1671.



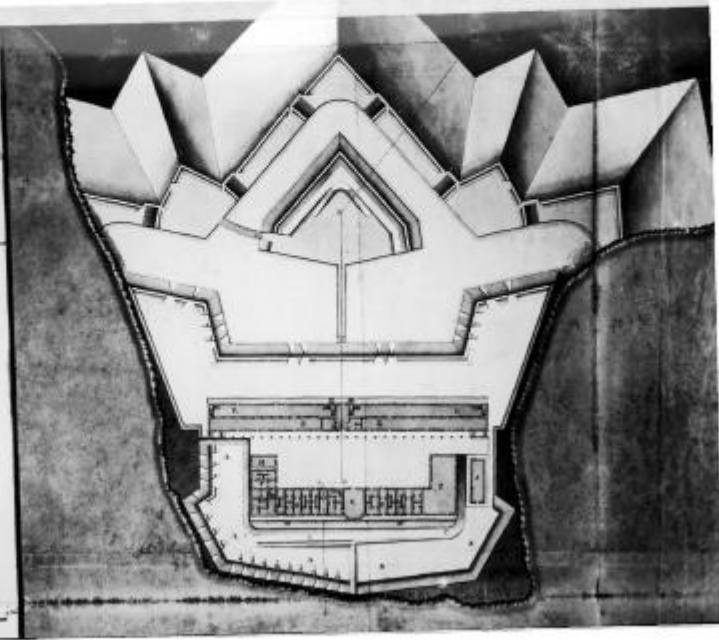
cuanto sus Arroyos que se de
hacer sobre el terreno
alrededor de el Castillo de
Vedra.

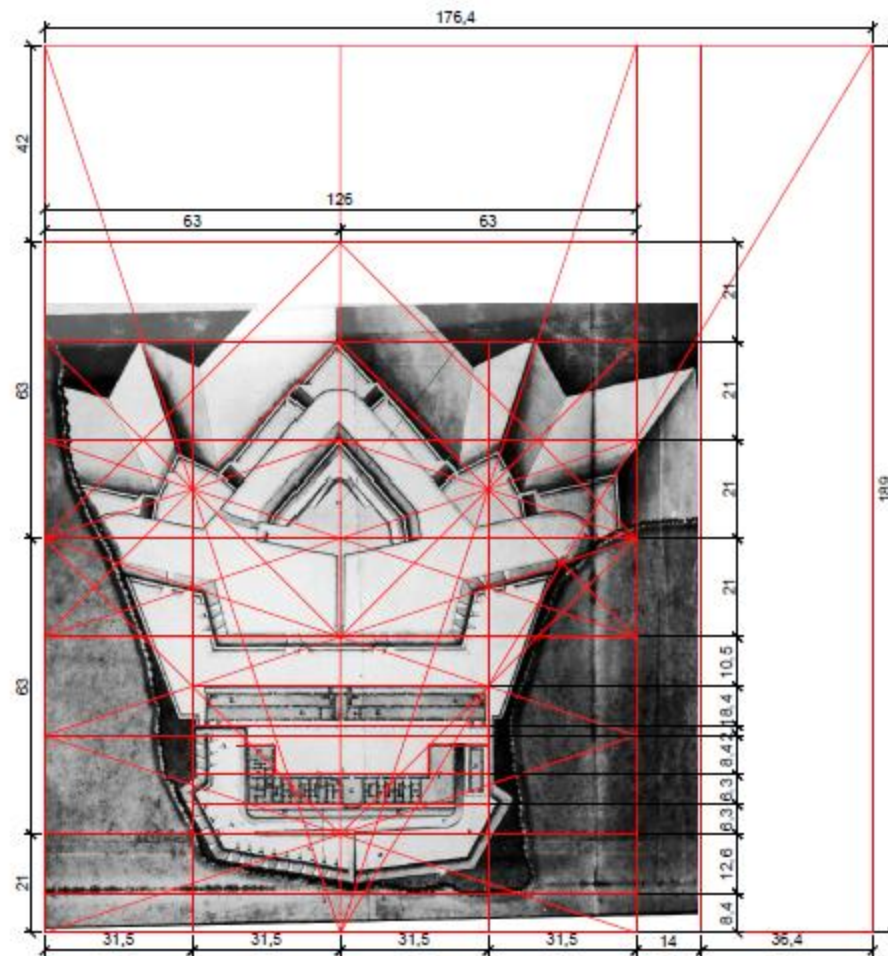
Explicacion.

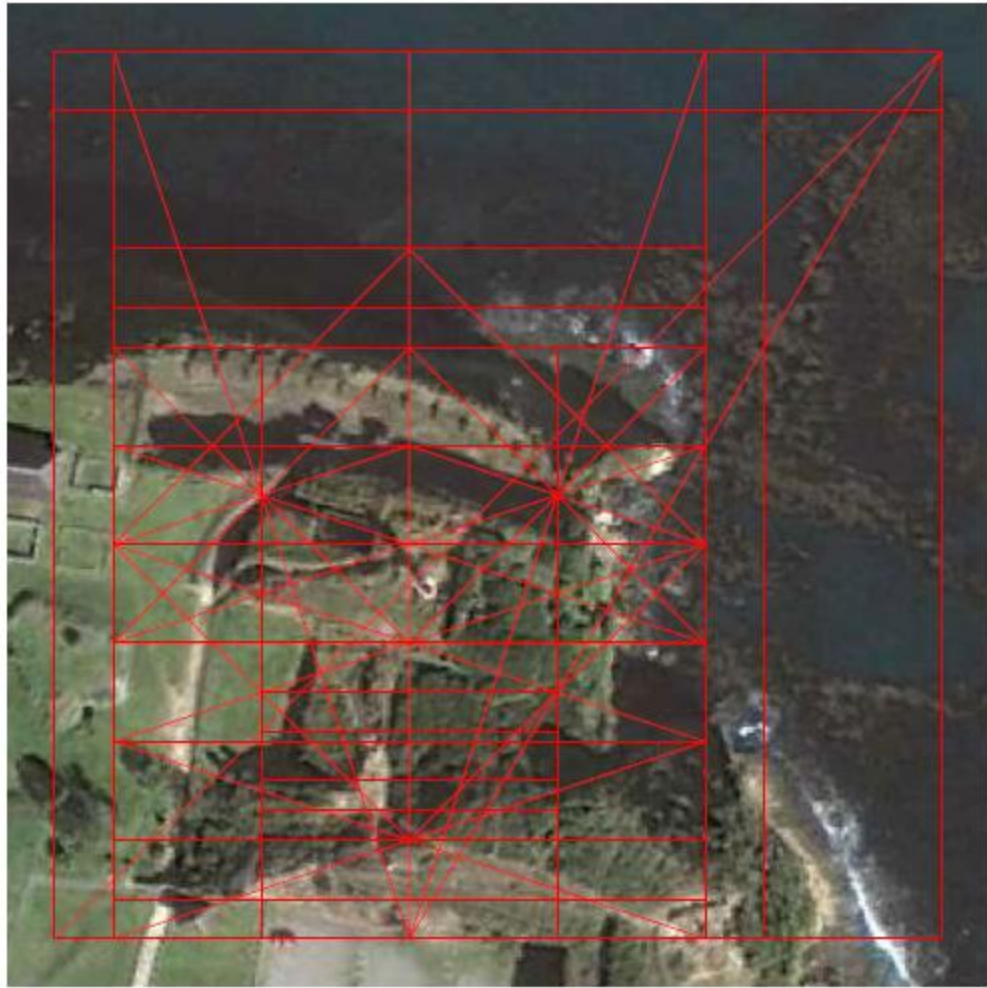
Oratorio
Barraca para el Alcaide que cubre la entrada
Rampas
Escaleras
Barracas
Barracas para el Alcaide y para el
Barraca para el Alcaide
Vedra
Cuerpo
Barraca de Armas
Barraca de Agua

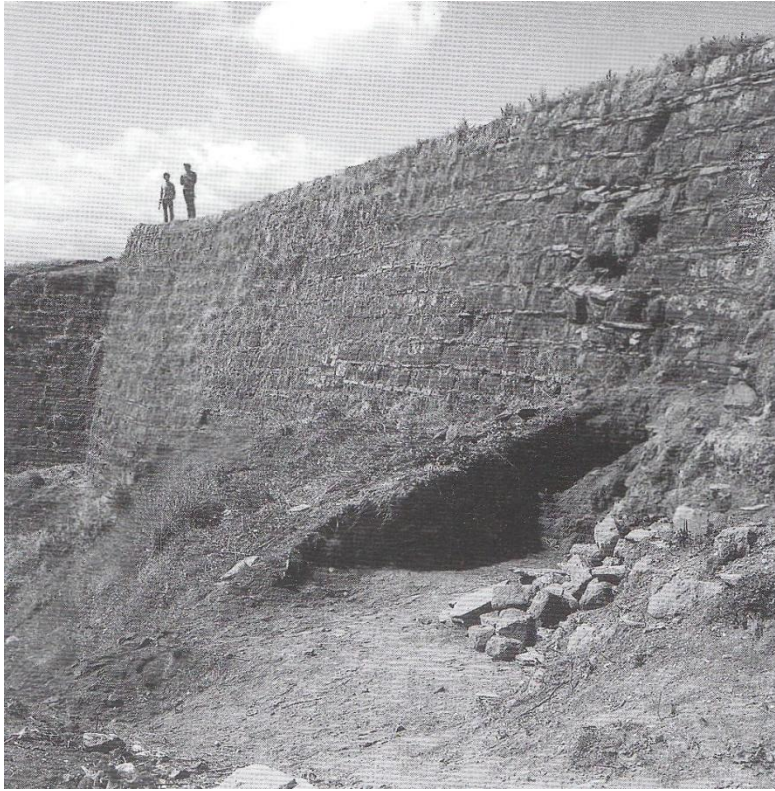
Hecho en Madrid a 10 de Mayo de 1788.

Don Juan de Villacampa





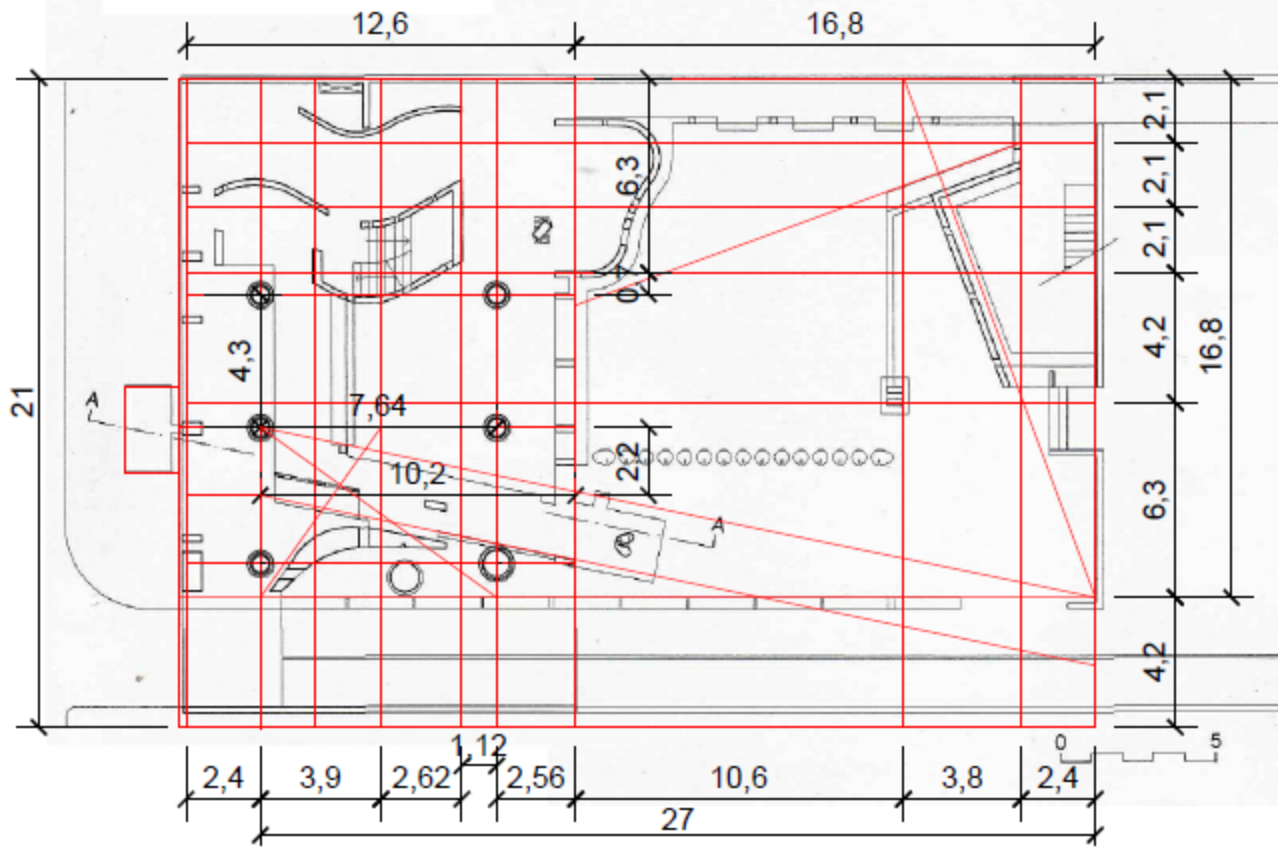


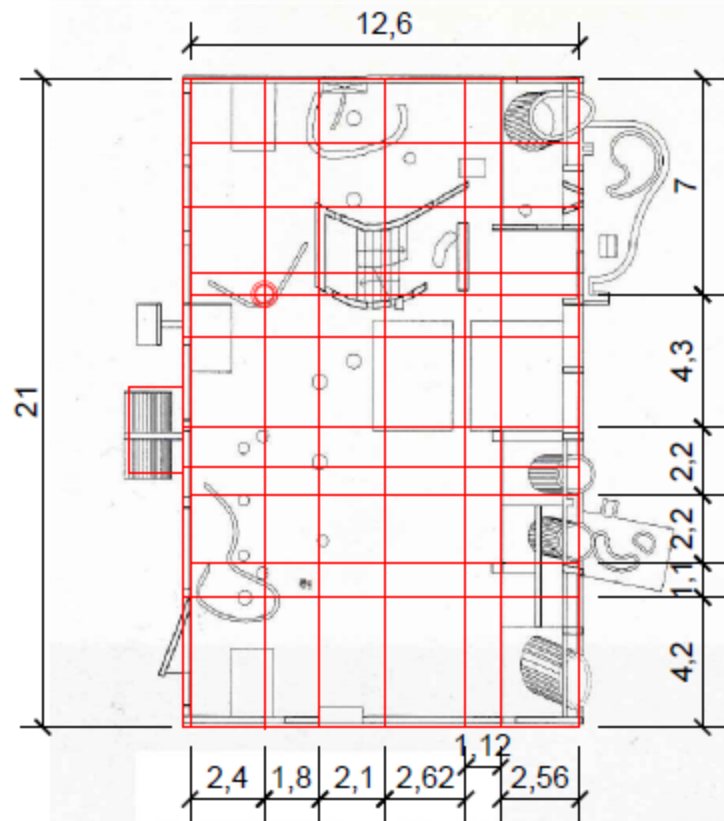


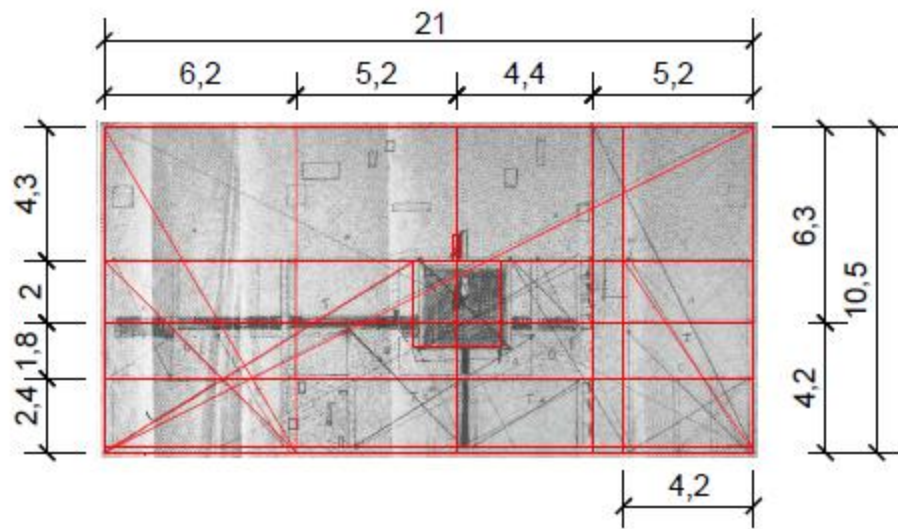


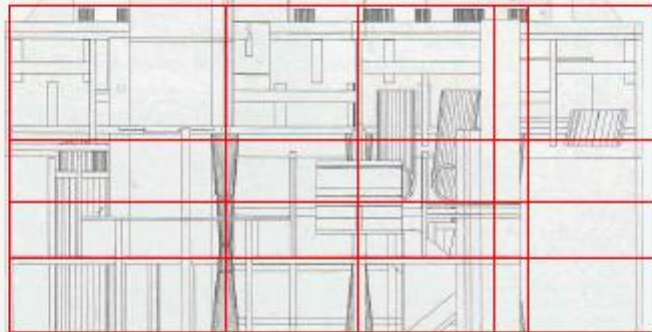
COOPERATIVA ELÉCTRICA DE CHILLÁN, 1967.



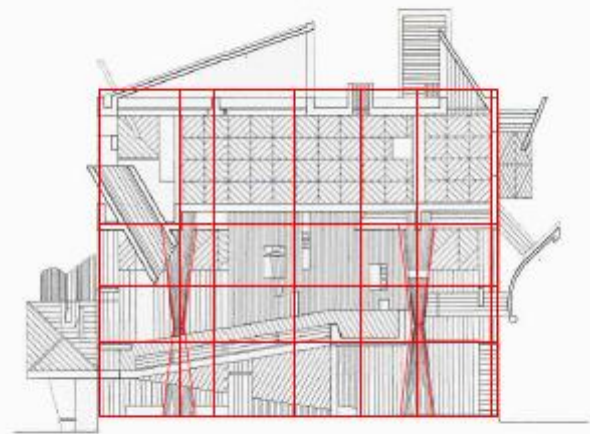




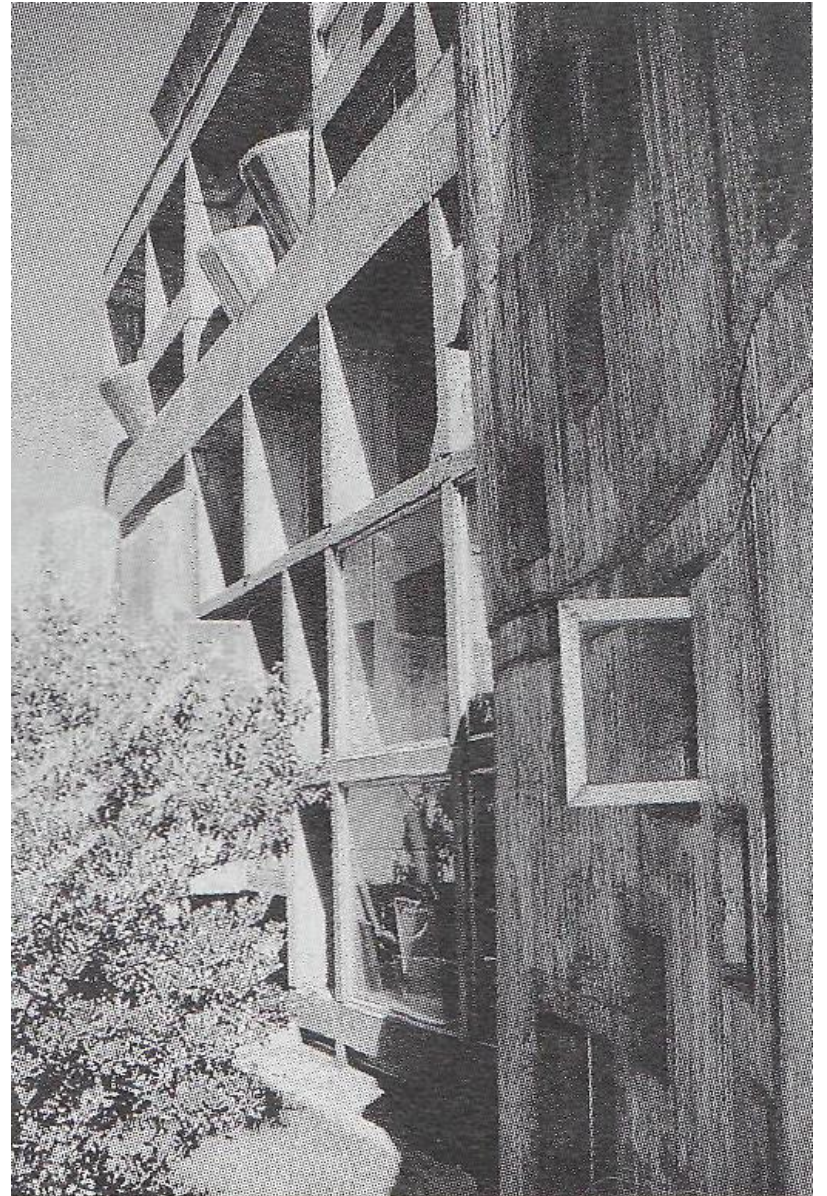
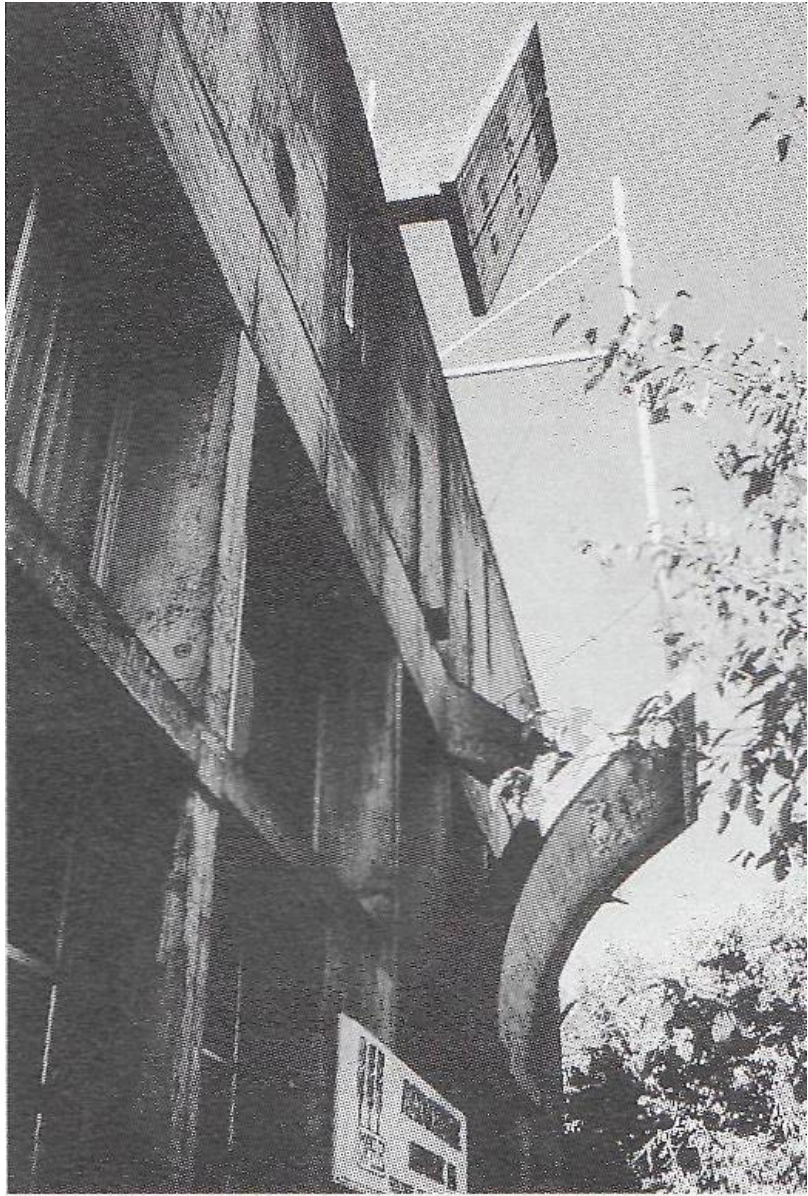


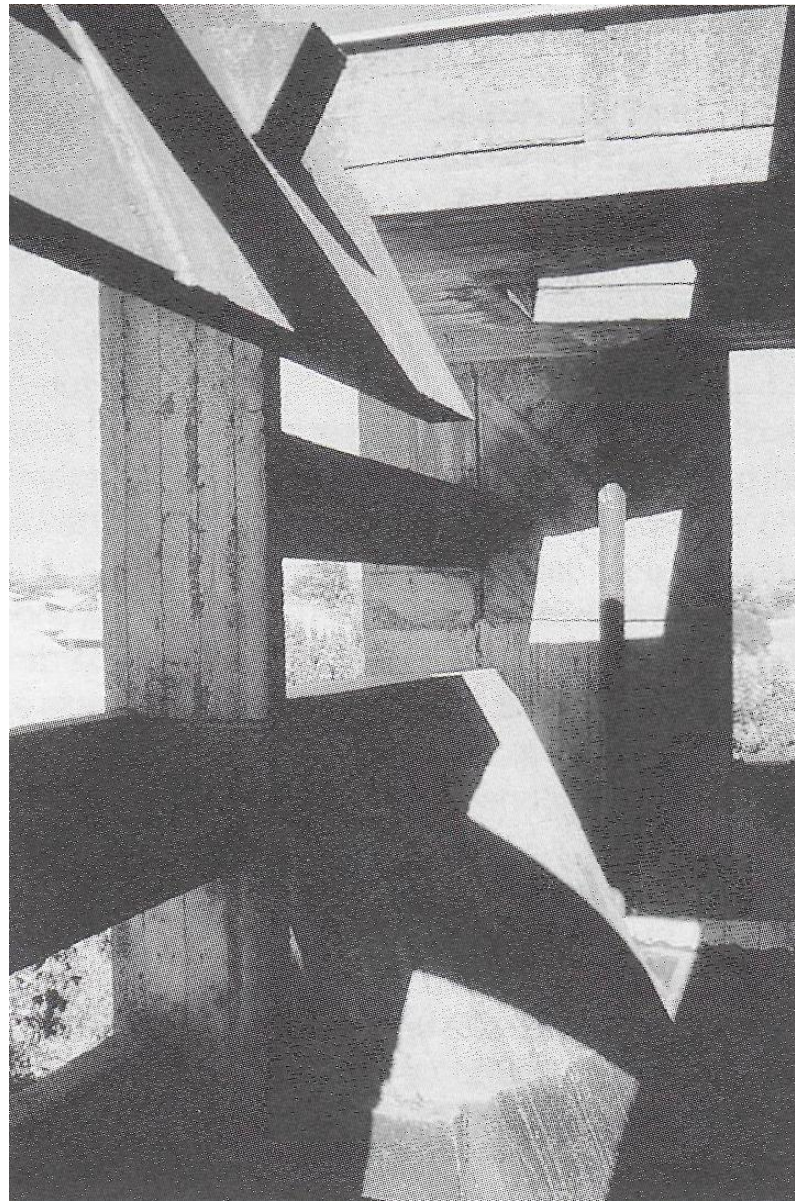
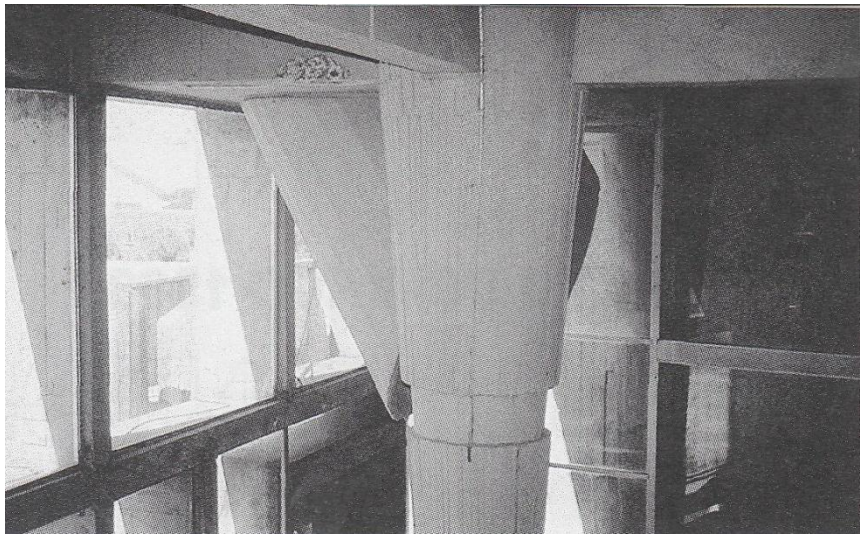


Elevación acceso



Corte A-A'





BIBLIOTECA PARQUE ESPAÑA, 2007.

